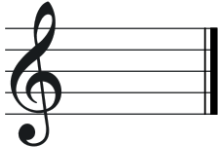


Natural Minor Scales

Here are a few of the more common natural minor scales to get you started.

A minor



The Key of Am has no sharps and no flats. Its relative Major is C Maj. Remember, the relative Major will have the same key signature (number of sharps or flats) as its relative minor.

I've transcribed 2 full octaves in first position. This is followed by 2 octaves of its relative Major - C Major.

Am Scale Relative Major - C Major

SimplyMandolin.com

Am (First Octave)

Am (Second Octave)

TAB: 2-4-5 | 0-2-3-5 | 0 | 5-3-2-0 | 5-4-2 | 0-2-3-5 | 0-1-3-5 | 3-1-0 | 5-3-2-0

Am (2 octaves)

TAB: 2-4-5 | 0-2-3-5 | 0 | 2-3-5 | 0-1-3-5 | 5-3-1-0 | 5-3-2-0 | 5-3-2-0 | 5-4-2

Relative Major = C Major

TAB: 5 | 0-2-3-5 | 0-2-3 | 5 | 0-1-3-5-7-8 | 8-7-5-3-1-0 | 5-3 | 2-0 | 5-3-2-0 | 5

SimplyMandolin.com

Natural Minor Scales

E minor



The Key of Em has one sharp (F#). Its relative Major is G Maj.
There is only one full octave of the Em scale in first position. I've also transcribed 2 octaves of G Major (it's relative Major). Notice how the Em scale starts on the 6th scale degree of G Major.

Em Scale Relative Major - G Major

SimplyMandolin.com

Em (One Octave)

T
A
B

2-4-5 | 0-2-3-5 | 0 | 5-3-2-0 | 5-4-2

Relative Major = G Major

T
A
B

0-2-4-5 | 0-2-4-5 | 0-2-3-5 | 0-2-3 | 3-2-0 | 5-3-2-0 | 5 | 4-2-0 | 5-4-2-0

SimplyMandolin.com

Natural Minor Scales

B minor



The Key of Bm has 2 sharps (F# and C#). Its relative Major is D Maj.
There are 2 octaves of the Bm scale in first position, and 2 octaves of its relative Major.

Bm Scale Relative Major - D Major

SimplyMandolin.com

The image displays three systems of musical notation for the B minor scale and its relative major, D major, in first position. Each system consists of a treble clef staff with a key signature of two sharps (F# and C#) and a 4/4 time signature, and a corresponding mandolin tablature staff with strings labeled T, A, and B. The first system is labeled "Bm (First Octave)" and "Bm (Second Octave)". The second system is labeled "Bm (2 octaves)". The third system is labeled "Relative Major = D Major". The tablature includes fret numbers and string indicators for each note in the scale.

SimplyMandolin.com

Natural Minor Scales

D minor



The Key of Dm has 1 flat (Bb). Its relative Major is F Maj.
I've transcribed only one octave of Dm and one octave of its relative Major.

Dm Scale Relative Major - F Major

SimplyMandolin.com

Dm (One Octave)

T
A
B

0-2-3-5 | 0-1-3-5 | 3-1-0 | 5-3-2-0

Relative Major = F Major

T
A
B

3-5 | 0-1-3-5 | 0-1 | 0 | 5-3-1-0 | 5-3

SimplyMandolin.com

Natural Minor Scales

G minor



The Key of Gm has 2 flats (Bb and Eb). Its relative minor is Bb Maj.
I've transcribed 2 full octaves in first position. This is followed by 2 octaves of its relative Major - Bb Major.

Gm Scale Relative Major - Bb Major

SimplyMandolin.com

Gm (First Octave)

Gm (Second Octave)

TAB

0-2-3-5 0-1-3-5 3-1-0 5-3-2-0 5 0-1-3-5-6 1-3 1 6-5-3-1-0 5

Gm (2 Octaves)

TAB

0-2-3-5 0-1-3-5 0-1-3-5-6 1-3 3-1 6-5-3-1-0 5 3-1-0 5-3-2-0

Relative Major = Bb Major

TAB

3-5 0-1-3-5 0-1 3-5-6 1-3-5-6 6-5-3-1 6-5-3-1 0 5-3-1-0 5-3

SimplyMandolin.com